



**INFORMED  
SEEDING  
DECISIONS.**

# 2015

**Small Plot and Field Scale Data**

This version has been revised to include both small plot and field scale data.

For more information visit [www.canolaperformancetrials.ca](http://www.canolaperformancetrials.ca)

Brought to you by:



# THE NEXT GENERATION IN VARIETY EVALUATION.

Canola Performance Trials (CPT) represent the next generation in variety evaluation for Western Canadian canola growers. The trials provide:

- Relevant, unbiased and timely performance data that reflects actual production practices.
- Comparative data on leading varieties and newly introduced varieties.

The CPT system includes both small plot and large field scale trials. Results for 2015 are based on 29 small plot trials and 33 standard field scale trials across the Prairies. Further information and variety evaluation tools are available online at [www.canolaperformancetrials.ca](http://www.canolaperformancetrials.ca).

Field scale comparisons add extra perspective for assessing consistency in variety performance. For field scale plots, two or more varieties were compared at each site, and each site had a common check, 5440. Comparisons are based on harvested strips of 0.5 to 1.5 acres each. Field scale data is not necessarily replicated in all cases, but the data presented has been audited to make sure it complies with CPT protocols.

The CPT technical committee established protocols and developed research plot designs to ensure that the data is representative. Performance objectives were established to provide guidelines on timely field operations and data collection.

Site distribution is based on seeded acres in Manitoba, Saskatchewan, Alberta and British Columbia.

The small plot system ensures that:

- All varieties are treated with appropriate commercially associated herbicides and seed treatments.
- An independent third party representative inspects all trials.
- Varieties are in blocks based on maturity. That way, harvest occurs at the appropriate time to minimize harvest losses due to maturity differences.

All sites are inspected to verify these guidelines were followed to allow a fair comparison among the varieties tested.

Audits of field scale projects give growers the confidence that the protocol was conducted in a scientifically sound manner and that comparisons are appropriate. Qualified professionals with extensive background in conducting field scale research trials perform the audits.

This booklet is one of several sources of information to consider in making the best decisions for your farm.



# PROGRAM MANAGEMENT

The three Prairie canola grower groups – Alberta Canola Producers Commission, the Saskatchewan Canola Development Commission (SaskCanola) and the Manitoba Canola Growers Association – fund the program. The Canola Council of Canada delivers the program.

Seed trade companies that participate pay entry fees. The B.C. Grain Producers Association is conducting trials in the Peace region as its means of participation.

Haplotech (led by Dr. Rale Gjuric) coordinates the trials under the guidance of a governance committee that oversees approval of varieties, protocol design, data collection, analysis and reporting, and financial management. Governance committee members include representatives from the provincial grower groups including B.C.; provincial oilseed specialists from Manitoba, Saskatchewan and Alberta; three commercial Canadian Seed Trade Association representatives; and the Canola Council of Canada (CCC). The CCC delivers the program on their behalf.

For 2015, participants in the trials consist of line companies, independent retailers and seed companies including Bayer CropScience, BrettYoung Seeds, CANTERRA SEEDS, Cargill, DL Seeds, Syngenta and Proven Seed/ Crop Production Services.

# USING THE TABLES

Results are organized by short, medium and long season zones. CPT uses the Western Canada Canola/Rapeseed Recommending Committee (WCC/RRC) season zones, which are based on typical frost free days, growing degree days and soil type. Grey wooded soils, for example, are in the short season zone. See Table A for specific numbers for each zone.

Table A: Season Zones		
Season	Frost Free Days	Growing Degree Days (Base 5°C)*
Short	75–95	1,100–1,450
Medium	95–115	1,450–1,700
Long	115+	1,700+

\*On a base 5°C scale, growing degree days only accumulate on days when highs are above 5°C.

Small plot and field scale data are presented separately in the following tables. For more detailed performance results, growing conditions and production details for specific trial sites, use the online CPT database at [www.canolaperformancetrials.ca](http://www.canolaperformancetrials.ca).

The tables include yield, days to maturity, height and lodging scores for each variety. Lodging scores are between 1 and 5, with 1 being no lodging and 5 being completely lodged.

Gross revenue is based on yield multiplied by \$10.87/bu. This is based on \$478.30 per tonne, the March 2016 futures close on October 1, 2015 and a 50-pound bushel weight. Premiums are included in the calculations for specialty market varieties.

In the tables, varieties are listed numerically and alphabetically, starting with Clearfield (CL) varieties, followed by Liberty Link (LL) and Roundup Ready (RR).

Each zone and small plot location is identified on the map on page 5.

1. To begin, use the map on page 5. Identify your growing season zone and trial locations closest to your farm.
2. To evaluate yield potential, look at all small plot and field scale locations in your growing season zone and the average yield for your zone.
3. Consider other information such as maturity, lodging resistance and cost.
4. Ask your seed dealer for more information on specific varieties.

# TOOLS TO HELP YOU MAKE BETTER CHOICES

**CV** – For coefficient of variation (CV), the lower the CV value, the more reliable the test. For example, if comparing results from two test locations, one with a CV of 4% and the other with a CV of 8%, the test with the CV of 4% can be considered more reliable. There is always variability in research trials. The key is designing and managing experiments so CVs stay within a reasonable range. For the CPT, experience has shown that CVs below 15% indicate good test reliability.

**LSD** – The least significant difference (LSD at a 5% level of statistical significance) for each dataset indicates whether differences between varieties are statistically meaningful. Varieties should only be considered different in yield performance if the

numerical difference between them is greater than the LSD value. Using the sample table below, if the LSD is 5.0, varieties A and B are not statistically different, B and C are not statistically different, but A and C are statistically different. In the yield graphs for each season zone (see page 7), LSD for each variety group is given on the left.

Variety	Yield (bu./ac.)
A	52
B	54
C	58
LSD	5.0

## Small Plot Locations Throughout Western Canada



# CANOLA PERFORMANCE TRIALS 2015 RESULTS

## Average Results by Season Zone (small plot data)

Variety	Long Season Zone (8 trials)				Mid Season Zone (15 trials)				Short Season Zone (6 trials)				Disease* Tolerance	Distributor
	Yield (% 5440)	Maturity (days)	Lodging (1-5)	Height (inches)	Yield (% 5440)	Maturity (days)	Lodging (1-5)	Height (inches)	Yield (% 5440)	Maturity (days)	Lodging (1-5)	Height (inches)		
<b>Clearfield</b>														
5525 CL	98	92	2.3	50	91	96	2.1	48	93	103	2.0	44	BL	BrettYoung
CS2200 CL	94	93	2.5	50	93	97	2.4	47	94	103	2.4	45	BL	CANTERRA SEEDS
LSD (%)	13				14				13					
<b>Liberty Link</b>														
5440	100	93	1.8	51	100	96	1.3	49	100	103	1.6	44	BL	Bayer CropScience
L252	117	93	2.3	49	107	97	2.3	48	111	103	2.0	43	BL	Bayer CropScience
L261	108	94	2.5	54	104	98	1.8	52	106	104	1.5	46	BL	Bayer CropScience
L140P	107	92	3.5	49	99	95	2.9	48	97	101	2.6	43	BL	Bayer CropScience
LSD (%)	10				10				10					
<b>Roundup Ready</b>														
1990	100	92	3.0	46	95	96	3.0	46	89	103	3.4	42	BL	CANTERRA SEEDS
6056 CR	97	95	2.4	49	93	98	2.2	47	90	104	2.1	41	BL / CR	BrettYoung
6074 RR	105	95	2.7	49	102	98	2.1	47	99	105	2.1	44	BL	BrettYoung
6080 RR	98	93	2.4	48	97	97	1.9	48	94	103	2.3	43	BL	BrettYoung
CS2000	102	94	2.4	52	100	97	2.5	50	101	103	3.5	45	BL / CR	CANTERRA SEEDS
CS2100	102	94	2.5	48	–	–	–	–	–	–	–	–	BL	CANTERRA SEEDS
SY4157	105	94	2.3	52	102	98	2.3	49	96	104	2.6	41	BL	Syngenta
SY4166	101	92	3.0	51	98	96	2.9	48	89	104	3.3	41	BL	Syngenta
V12-1*	100	93	2.3	50	94	96	2.8	47	91	103	3.5	41	BL	Cargill – VICTORY Hybrid Canola
V12-3*	102	93	2.7	50	99	97	2.9	47	97	103	3.3	40	BL / CR	Cargill – VICTORY Hybrid Canola
14H1176	108	96	2.4	53	102	99	2.0	50	99	105	2.3	44	BL / CR	Syngenta
14DL30209**	95	92	2.8	49	95	96	2.0	46	86	102	3.0	44	BL	DL Seeds
PS-SY 13-1579**	107	94	2.0	51	101	98	1.5	49	98	103	1.6	44	BL	Proven Seed / CPS
PS-SY 13-1651**	102	92	2.0	48	95	96	2.0	46	90	102	1.9	41	BL	Proven Seed / CPS
LSD (%)	8				11				11					
<b>Check Mean 5440 (bu/ac)</b>	<b>58</b>				<b>64</b>				<b>68</b>					

\*Indicates varieties with specialty oil profiles and premiums associated with pricing. Visit [www.canolaperformancetrials.ca](http://www.canolaperformancetrials.ca) for more details. \*\*Indicates varieties that have been supported for registration.

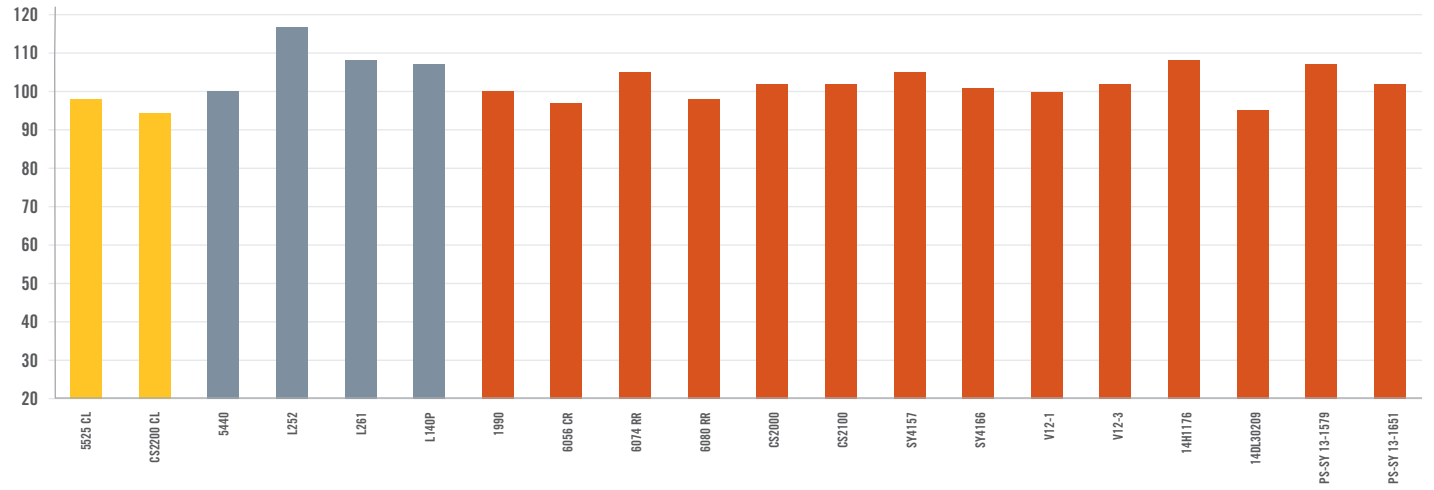
\*Indicates genetic resistance with an "R" or resistant rating to specific disease affecting canola, BL = Blackleg, CR = Clubroot.



## Long Season Yield

as % of 5440 (58 bu/ac)

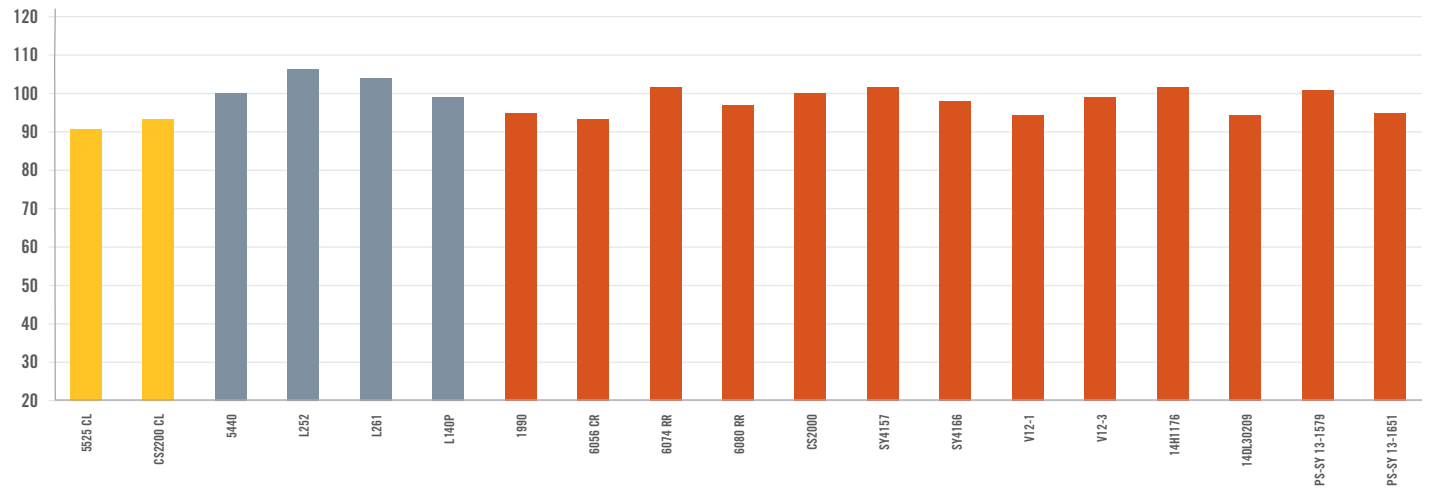
- Clearfield LSD: 13
- Liberty Link LSD: 10
- Roundup Ready LSD: 8



## Mid Season Yield

as % of 5440 (64 bu/ac)

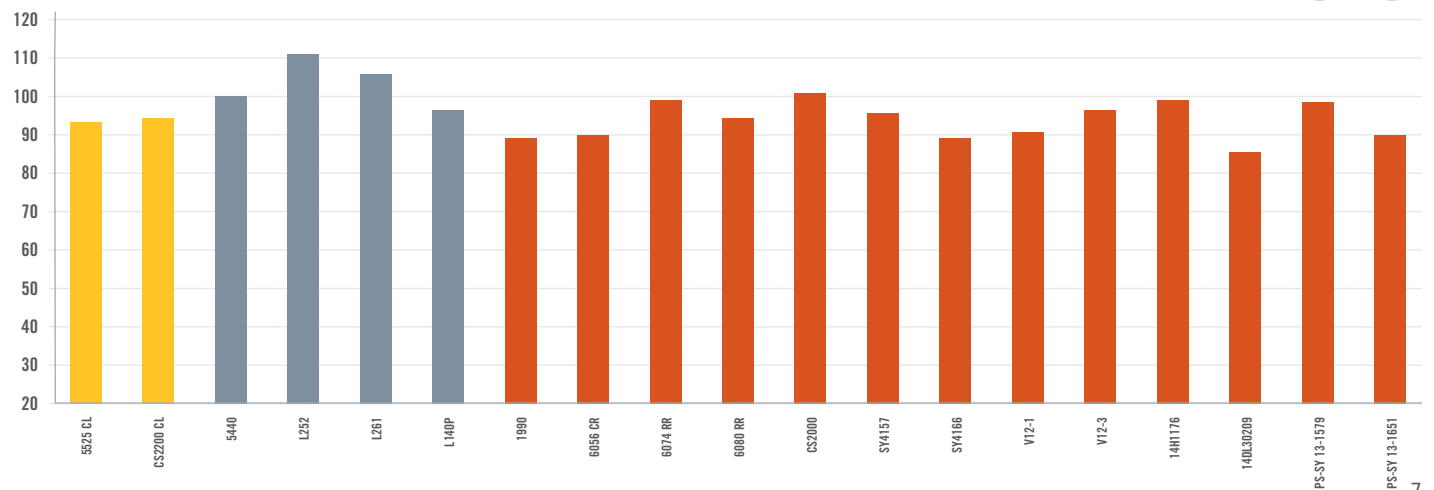
- Clearfield LSD: 14
- Liberty Link LSD: 10
- Roundup Ready LSD: 11



## Short Season Yield

as % of 5440 (68 bu/ac)

- Clearfield LSD: 13
- Liberty Link LSD: 10
- Roundup Ready LSD: 11



# CANOLA PERFORMANCE TRIALS 2015 RESULTS

## Long Season Zone: Small plot results by location

Variety	Beausejour, MB					Elm Creek, MB					Melita, MB					Outlook, SK				
	Yield (% 5440)	Gross Revenue/ac	Days to Maturity	Lodging	Height (in.)	Yield (% 5440)	Gross Revenue/ac	Days to Maturity	Lodging	Height (in.)	Yield (% 5440)	Gross Revenue/ac	Days to Maturity	Lodging	Height (in.)	Yield (% 5440)	Gross Revenue/ac	Days to Maturity	Lodging	Height (in.)
<b>Clearfield</b>																				
5525 CL	104	\$352	94	2.0	49	108	\$416	94	–	52	109	\$632	97	–	47	95	\$847	97	3.0	52
CS2200 CL	102	\$343	96	2.0	51	106	\$409	95	–	50	98	\$564	97	–	42	82	\$735	97	3.3	52
LSD (%)	28					12					9				20					
<b>Liberty Link</b>																				
5440	100	\$338	97	2.0	51	100	\$385	94	–	49	100	\$577	95	–	46	100	\$894	95	2.0	48
L252	141	\$474	96	3.0	55	135	\$521	96	–	49	114	\$661	96	–	47	112	\$1,001	96	2.5	44
L261	121	\$408	97	3.0	55	114	\$441	97	–	53	117	\$676	97	–	53	103	\$919	97	2.5	51
L140P	129	\$436	97	5.0	50	111	\$427	94	–	51	104	\$601	96	–	44	102	\$912	96	3.3	49
LSD (%)	21					11					15				13					
<b>Roundup Ready</b>																				
1990	94	\$316	94	3.0	49	103	\$397	94	–	47	110	\$634	97	–	40	103	\$917	95	3.5	46
6056 CR	108	\$364	95	1.0	52	108	\$417	96	–	48	102	\$590	98	–	48	95	\$852	100	2.8	49
6074 RR	106	\$359	94	2.0	47	126	\$485	97	–	49	108	\$624	97	–	43	101	\$907	100	3.0	53
6080 RR	86	\$289	94	1.0	50	118	\$453	95	–	48	105	\$604	96	–	38	94	\$842	99	2.8	48
CS2000	103	\$347	96	1.0	48	115	\$443	95	–	54	102	\$591	96	–	40	97	\$865	98	3.0	55
CS2100	104	\$350	94	2.0	50	114	\$438	97	–	50	97	\$560	98	–	40	96	\$859	98	2.8	49
SY4157	109	\$368	95	2.0	46	124	\$479	97	–	54	111	\$643	98	–	49	100	\$890	98	2.8	52
SY4166	123	\$415	94	3.0	51	111	\$428	96	–	54	102	\$588	97	–	45	83	\$739	97	3.3	51
V12-1*	100	\$365	95	1.0	51	118	\$494	96	–	51	104	\$652	97	–	44	88	\$848	99	3.0	49
V12-3*	125	\$456	94	3.0	52	115	\$481	96	–	50	103	\$645	97	–	46	94	\$908	97	3.0	49
14H1176	130	\$440	97	2.0	54	124	\$480	98	–	53	109	\$632	98	–	45	98	\$877	100	2.8	55
14DL30209**	100	\$338	94	2.0	51	101	\$390	94	–	52	97	\$562	97	–	42	87	\$780	98	3.3	49
PS-SY 13-1579**	132	\$446	97	1.0	53	131	\$506	95	–	50	108	\$624	98	–	43	95	\$851	98	2.5	52
PS-SY 13-1651**	118	\$400	95	1.0	50	117	\$452	95	–	49	104	\$603	96	–	40	87	\$776	98	2.5	49
LSD (%)	18					8					9				11					
<b>Check Mean 5440 (bu/ac)</b>	31					35					53				82					
<b>Grand Mean (bu/ac)</b>	35					41					56				79					
<b>CV%</b>	13.1					9.1					6.6				7.8					

\*Indicates varieties with specialty oil profiles and premiums associated with pricing. Visit [www.canolaperformancetrials.ca](http://www.canolaperformancetrials.ca) for more details. \*\*Indicates varieties that have been supported for registration.



# CANOLA PERFORMANCE TRIALS 2015 RESULTS

## Long Season Zone: Small plot results by location

Variety	Portage la Prairie, MB					Souris, MB					Stonewall, MB					Thornhill, MB					
	Yield (% 5440)	Gross Revenue/ac	Days to Maturity	Lodging	Height (in.)	Yield (% 5440)	Gross Revenue/ac	Days to Maturity	Lodging	Height (in.)	Yield (% 5440)	Gross Revenue/ac	Days to Maturity	Lodging	Height (in.)	Yield (% 5440)	Gross Revenue/ac	Days to Maturity	Lodging	Height (in.)	
<b>Clearfield</b>																					
5525 CL	83	\$622	83	2.8	52	98	\$693	84	1.3	53	88	\$749	91	2.0	51	99	\$513	98	3.0	44	
CS2200 CL	84	\$629	84	2.8	53	97	\$685	87	1.3	55	83	\$708	92	2.5	49	102	\$528	99	3.0	47	
LSD (%)	11					21					5					2					
<b>Liberty Link</b>																					
5440	100	\$750	84	2.0	58	100	\$705	88	1.0	55	100	\$853	91	1.3	55	100	\$518	98	2.5	43	
L252	105	\$788	84	2.3	52	105	\$742	89	1.5	51	108	\$926	94	2.0	52	116	\$599	98	2.8	43	
L261	95	\$716	84	2.8	59	103	\$723	90	1.3	56	105	\$893	94	2.5	56	103	\$533	99	3.0	47	
L140P	94	\$707	82	4.5	55	114	\$802	84	2.3	53	97	\$831	89	3.0	49	105	\$543	97	3.0	41	
LSD (%)	9					6					5					4					
<b>Roundup Ready</b>																					
1990	91	\$680	83	4.3	51	111	\$782	86	1.5	50	97	\$827	89	3.0	46	95	\$492	98	3.0	42	
6056 CR	82	\$616	85	3.5	54	100	\$702	92	1.0	53	88	\$755	93	3.3	49	93	\$480	99	3.0	44	
6074 RR	87	\$653	84	3.3	54	111	\$785	91	1.5	55	100	\$850	95	3.3	49	102	\$529	99	3.0	45	
6080 RR	91	\$685	84	3.8	53	108	\$761	87	1.3	51	95	\$814	89	2.8	52	91	\$471	98	3.0	42	
CS2000	88	\$657	85	2.8	57	99	\$695	90	1.8	55	100	\$850	92	2.5	57	112	\$579	99	3.3	47	
CS2100	93	\$697	84	2.8	54	109	\$770	88	2.0	51	94	\$805	93	2.3	50	109	\$564	99	3.0	41	
SY4157	91	\$684	86	2.8	58	104	\$733	89	1.3	54	96	\$819	94	2.0	55	108	\$559	99	3.0	48	
SY4166	89	\$665	82	4.0	55	107	\$756	86	2.0	58	91	\$780	89	2.3	52	103	\$536	97	3.3	42	
V12-1*	86	\$702	83	3.0	58	109	\$833	87	1.5	54	93	\$858	93	2.5	52	103	\$579	98	3.0	42	
V12-3*	83	\$677	84	2.8	54	103	\$783	89	2.0	54	92	\$851	92	2.5	53	101	\$569	99	3.0	42	
14H1176	87	\$649	87	2.8	56	109	\$766	92	1.3	59	95	\$807	96	2.5	54	110	\$568	99	3.0	49	
14DL30209**	89	\$667	82	3.5	54	98	\$693	85	2.0	54	87	\$742	89	3.0	48	100	\$519	98	3.3	44	
PS-SY 13-1579**	92	\$690	85	2.8	56	93	\$653	90	1.0	53	96	\$818	94	2.5	54	108	\$560	99	2.5	47	
PS-SY 13-1651**	89	\$671	82	2.5	53	99	\$700	86	1.0	49	92	\$781	89	2.0	49	108	\$559	98	3.0	45	
LSD (%)	7					7					5					10					
<b>Check Mean 5440 (bu/ac)</b>	69					65					79					48					
<b>Grand Mean (bu/ac)</b>	62					67					74					49					
<b>CV%</b>	5.7					6.6					3.3					6.3					

\*Indicates varieties with specialty oil profiles and premiums associated with pricing. Visit [www.canolaperformancetrials.ca](http://www.canolaperformancetrials.ca) for more details. \*\*Indicates varieties that have been supported for registration.

# CANOLA PERFORMANCE TRIALS 2015 RESULTS

## Mid Season Zone: Small plot results by location

Variety	Aberdeen, SK					Arborg, MB					Dauphin, MB					Elstow, SK					Foam Lake, SK				
	Yield (% 5440)	Gross Revenue/ac	Days to Maturity	Lodging	Height (in.)	Yield (% 5440)	Gross Revenue/ac	Days to Maturity	Lodging	Height (in.)	Yield (% 5440)	Gross Revenue/ac	Days to Maturity	Lodging	Height (in.)	Yield (% 5440)	Gross Revenue/ac	Days to Maturity	Lodging	Height (in.)	Yield (% 5440)	Gross Revenue/ac	Days to Maturity	Lodging	Height (in.)
<b>Clearfield</b>																									
5525 CL	90	\$402	99.5	–	36	80	\$370	–	2.5	44	95	\$605	90	1.0	50	81	\$570	98	2.5	47	85	\$764	95	3.0	49
CS2200 CL	94	\$419	99.5	–	37	80	\$369	–	2.0	44	96	\$611	91	1.0	49	89	\$621	99	3.0	46	85	\$763	96	3.3	52
LSD (%)	15					1					8					33					15				
<b>Liberty Link</b>																									
5440	100	\$447	97.3	–	36	100	\$463	–	1.0	45	100	\$639	89	1.3	53	100	\$702	97	2.8	49	100	\$893	95	1.5	55
L252	114	\$509	97.0	–	36	108	\$502	–	3.8	39	116	\$738	92	1.0	52	93	\$651	99	2.5	48	109	\$970	96	3.0	52
L261	89	\$399	98.8	–	37	103	\$477	–	3.5	47	109	\$698	91	1.3	52	94	\$659	99	2.5	49	102	\$915	98	1.8	57
L140P	93	\$414	99.0	–	34	97	\$450	–	4.8	42	110	\$700	89	1.8	52	92	\$642	97	2.5	44	94	\$842	92	4.0	53
LSD (%)	9					19					13					17					8				
<b>Roundup Ready</b>																									
1990	98	\$436	98.8	–	36	81	\$375	–	3.5	38	111	\$712	94	2.0	47	89	\$623	99	2.5	42	85	\$764	93	4.0	44
6056 CR	91	\$407	99.0	–	36	65	\$302	–	1.3	42	108	\$691	94	1.3	50	98	\$687	99	2.5	44	88	\$790	95	2.8	49
6074 RR	111	\$495	99.0	–	36	81	\$376	–	2.5	42	122	\$779	96	1.5	48	82	\$574	99	2.3	44	101	\$900	97	2.3	49
6080 RR	98	\$438	97.8	–	34	80	\$371	–	1.5	42	115	\$735	95	1.5	51	89	\$625	98	2.5	44	93	\$828	95	2.8	50
CS2000	114	\$509	98.5	–	38	91	\$421	–	2.0	45	117	\$748	94	1.8	51	85	\$597	99	2.8	50	96	\$859	95	3.5	52
SY4157	107	\$476	99.0	–	35	109	\$504	–	2.8	46	108	\$691	92	1.5	53	88	\$615	100	3.0	43	98	\$879	96	2.5	51
SY4166	104	\$465	99.0	–	37	93	\$430	–	4.3	41	112	\$717	91	1.8	51	96	\$670	99	3.0	45	93	\$830	94	3.3	48
V12-1*	97	\$469	99.3	–	35	87	\$439	–	3.0	40	106	\$734	92	1.8	50	98	\$742	99	2.8	45	91	\$878	95	3.3	50
V12-3*	103	\$500	99.0	–	36	90	\$451	–	4.0	39	108	\$748	91	2.0	48	97	\$736	98	3.0	46	92	\$889	96	3.0	48
14H1176	108	\$484	99.5	–	35	99	\$457	–	1.8	45	110	\$700	93	1.5	54	92	\$647	99	3.0	46	91	\$811	97	2.3	51
14DL30209**	98	\$437	98.8	–	36	83	\$384	–	3.0	41	99	\$635	94	2.0	48	88	\$618	99	2.8	47	91	\$817	93	3.5	50
PS-SY 13-1579**	104	\$467	99.3	–	37	109	\$507	–	1.3	46	116	\$739	94	1.0	54	89	\$627	99	2.5	46	95	\$849	96	1.5	52
PS-SY 13-1651**	102	\$455	99.8	–	36	91	\$422	–	2.0	39	105	\$671	93	1.3	49	98	\$685	98	2.8	45	91	\$817	93	1.8	44
LSD (%)	9					16					8					12					8				
<b>Check Mean 5440 (bu/ac)</b>	41					43					59					65					82				
<b>Grand Mean (bu/ac)</b>	41					39					64					59					77				
<b>CV%</b>	7.1					9.1					6.9					10.1					5.6				

\*Indicates varieties with specialty oil profiles and premiums associated with pricing. Visit [www.canolaperformancetrials.ca](http://www.canolaperformancetrials.ca) for more details. \*\*Indicates varieties that have been supported for registration.

# CANOLA PERFORMANCE TRIALS 2015 RESULTS

## Mid Season Zone: Small plot results by location

Variety	Lamont, AB					Melfort 1, SK					Mundare, AB					Nipawin, SK					North Battleford, SK				
	Yield (% 5440)	Gross Revenue/ac	Days to Maturity	Lodging	Height (in.)	Yield (% 5440)	Gross Revenue/ac	Days to Maturity	Lodging	Height (in.)	Yield (% 5440)	Gross Revenue/ac	Days to Maturity	Lodging	Height (in.)	Yield (% 5440)	Gross Revenue/ac	Days to Maturity	Lodging	Height (in.)	Yield (% 5440)	Gross Revenue/ac	Days to Maturity	Lodging	Height (in.)
<b>Clearfield</b>																									
5525 CL	90	\$849	98	1.8	49	92	\$701	94	1.5	59	86	\$572	101	–	41	93	\$616	102	2.0	50	91	\$649	98	1.5	50
CS2200 CL	90	\$844	98	2.0	48	94	\$717	96	2.8	54	87	\$581	102	–	42	94	\$620	103	2.8	51	90	\$644	98	2.0	47
LSD (%)	8					6					53					14					8				
<b>Liberty Link</b>																									
5440	100	\$941	98	1.0	52	100	\$767	96	1.0	59	100	\$664	101	–	45	100	\$661	104	1.0	50	100	\$713	97	1.0	52
L252	111	\$1,042	98	1.8	48	109	\$833	96	2.0	57	98	\$649	101	–	43	100	\$661	106	2.3	51	105	\$748	98	2.0	49
L261	113	\$1,066	99	1.0	55	111	\$848	97	1.5	60	103	\$681	102	–	48	97	\$641	105	1.5	54	103	\$735	98	1.8	57
L140P	108	\$1,018	95	2.0	49	102	\$782	89	3.3	61	102	\$676	102	–	41	101	\$667	98	3.0	51	100	\$711	96	2.5	50
LSD (%)	7					6					16					14					6				
<b>Roundup Ready</b>																									
1990	97	\$910	96	2.8	47	100	\$768	91	3.0	60	81	\$537	103	–	39	96	\$634	103	3.8	51	99	\$704	98	3.0	47
6056 CR	89	\$834	98	1.5	47	94	\$724	95	2.5	57	88	\$586	102	–	43	97	\$638	104	2.8	49	90	\$639	101	1.8	50
6074 RR	105	\$985	98	1.0	48	107	\$821	96	2.8	58	99	\$660	102	–	43	101	\$665	102	2.8	50	96	\$686	101	1.3	47
6080 RR	92	\$863	97	1.5	51	101	\$776	95	1.8	60	87	\$581	102	–	47	98	\$646	102	2.5	51	97	\$691	98	1.3	48
CS2000	100	\$941	98	2.0	50	102	\$781	96	2.3	61	90	\$598	101	–	44	99	\$656	104	2.3	55	104	\$739	99	3.3	53
SY4157	101	\$949	98	2.3	51	100	\$766	97	2.0	59	96	\$637	102	–	43	92	\$607	104	2.0	55	100	\$709	99	2.3	47
SY4166	97	\$916	99	2.5	47	88	\$674	92	2.8	60	101	\$670	102	–	45	89	\$588	101	3.0	53	99	\$703	99	3.0	51
V12-1*	95	\$965	98	3.0	45	93	\$771	92	3.3	60	90	\$645	102	–	43	94	\$676	98	2.8	53	94	\$729	99	3.0	50
V12-3*	102	\$1,042	99	3.0	48	93	\$773	93	3.0	56	110	\$792	102	–	44	94	\$670	102	3.0	52	99	\$761	100	2.8	48
14H1176	104	\$979	100	1.5	54	94	\$717	98	2.3	57	88	\$587	102	–	43	96	\$633	106	1.8	56	100	\$710	101	1.5	52
14DL30209**	110	\$1,040	97	2.8	48	95	\$730	93	2.0	56	84	\$561	102	–	46	99	\$657	104	3.0	53	89	\$635	96	3.0	50
PS-SY 13-1579**	95	\$894	98	1.5	52	92	\$708	93	1.3	54	93	\$619	102	–	37	100	\$659	105	1.0	53	96	\$681	101	1.0	53
PS-SY 13-1651**	78	\$734	92	1.8	46	93	\$709	91	1.8	57	104	\$690	102	–	43	104	\$691	101.8	2.3	52	93	\$663	100	1.8	51
LSD (%)	6					5					14					10					7				
<b>Check Mean 5440 (bu/ac)</b>	87					71					61					61					66				
<b>Grand Mean (bu/ac)</b>	85					69					58					59					64				
<b>CV%</b>	8.2					3.8					9.8					8.6					4.8				

\*Indicates varieties with specialty oil profiles and premiums associated with pricing. Visit [www.canolaperformancetrials.ca](http://www.canolaperformancetrials.ca) for more details. \*\*Indicates varieties that have been supported for registration.

# CANOLA PERFORMANCE TRIALS 2015 RESULTS

## Mid Season Zone: Small plot results by location

Variety	Saskatoon 1, SK					Saskatoon 2, SK					Tofield, AB					Vulcan, AB					Yorkton, SK				
	Yield (% 5440)	Gross Revenue/ac	Days to Maturity	Lodging	Height (in.)	Yield (% 5440)	Gross Revenue/ac	Days to Maturity	Lodging	Height (in.)	Yield (% 5440)	Gross Revenue/ac	Days to Maturity	Lodging	Height (in.)	Yield (% 5440)	Gross Revenue/ac	Days to Maturity	Lodging	Height (in.)	Yield (% 5440)	Gross Revenue/ac	Days to Maturity	Lodging	Height (in.)
<b>Clearfield</b>																									
5525 CL	90	\$954	94	3.3	62	94	\$479	95	1.0	41	101	\$607	-	-	-	93	\$584	-	-	-	98	\$749	95	2.8	50
CS2200 CL	91	\$961	94	3.5	58	103	\$528	97	1.0	39	105	\$631	-	-	-	95	\$594	-	-	-	98	\$754	95	3.3	46
LSD (%)	12					27					18					7					4				
<b>Liberty Link</b>																									
5440	100	\$1,055	93	1.0	61	100	\$510	95	1.0	38	100	\$604	-	-	-	100	\$627	-	-	-	100	\$766	94	2.3	45
L252	111	\$1,168	94	3.0	56	116	\$591	95	1.0	39	105	\$635	-	-	-	97	\$610	-	-	-	111	\$849	95	2.8	47
L261	111	\$1,172	95	2.0	68	101	\$516	96	1.0	42	105	\$633	-	-	-	103	\$643	-	-	-	116	\$888	97	2.3	52
L140P	102	\$1,076	90	3.8	57	77	\$392	95	1.0	41	112	\$679	-	-	-	93	\$582	-	-	-	108	\$825	94	3.0	45
LSD (%)	7					14					13					9					4				
<b>Roundup Ready</b>																									
1990	99	\$1,044	94	4.0	56	75	\$382	93	1.0	41	105	\$634	-	-	-	110	\$688	-	-	-	97	\$742	93	3.0	47
6056 CR	95	\$1,005	97	4.5	58	76	\$386	96	1.0	38	119	\$719	-	-	-	102	\$642	-	-	-	99	\$758	96	2.3	45
6074 RR	99	\$1,043	98	3.8	61	116	\$592	97	1.0	42	92	\$555	-	-	-	116	\$726	-	-	-	108	\$827	98	2.0	48
6080 RR	95	\$1,000	96	2.3	59	92	\$471	94	1.0	40	112	\$675	-	-	-	101	\$635	-	-	-	108	\$826	95	2.5	46
CS2000	92	\$974	95	3.5	65	88	\$450	95	1.0	43	111	\$668	-	-	-	101	\$635	-	-	-	106	\$810	94	3.3	50
SY4157	97	\$1,019	97	3.8	63	99	\$503	95	1.0	43	135	\$813	-	-	-	106	\$667	-	-	-	98	\$753	96	2.8	47
SY4166	106	\$1,116	94	3.8	59	80	\$406	94	1.0	39	118	\$712	-	-	-	98	\$616	-	-	-	104	\$793	93	3.8	45
V12-1*	94	\$1,079	94	4.0	59	82	\$451	94	1.0	41	108	\$707	-	-	-	96	\$649	-	-	-	93	\$772	94	3.0	45
V12-3*	98	\$1,123	95	4.0	61	91	\$504	96	1.0	41	112	\$730	-	-	-	105	\$712	-	-	-	95	\$785	95	3.3	47
14H1176	96	\$1,018	99	3.5	67	104	\$531	96	1.0	43	135	\$813	-	-	-	107	\$673	-	-	-	107	\$822	97	2.5	48
14DL30209**	93	\$980	95	3.0	61	67	\$344	93	1.0	41	110	\$667	-	-	-	95	\$593	-	-	-	103	\$791	93	4.0	47
PS-SY 13-1579**	98	\$1,039	97	2.5	63	97	\$492	96	1.0	44	120	\$722	-	-	-	109	\$684	-	-	-	101	\$777	96	2.3	47
PS-SY 13-1651**	92	\$968	92	3.0	57	74	\$377	93	1.0	41	104	\$625	-	-	-	97	\$610	-	-	-	104	\$793	93	2.8	44
LSD (%)	7					12					18					9					8				
<b>Check Mean 5440 (bu/ac)</b>	97					47					56					58					70				
<b>Grand Mean (bu/ac)</b>	95					43					62					58					72				
<b>CV%</b>	5.0					10.2					12.2					4.7					5.5				

\*Indicates varieties with specialty oil profiles and premiums associated with pricing. Visit [www.canolaperformancetrials.ca](http://www.canolaperformancetrials.ca) for more details. \*\*Indicates varieties that have been supported for registration.

# CANOLA PERFORMANCE TRIALS 2015 RESULTS

## Short Season Zone: Small plot results by location

Variety	Barrhead, AB					Dawson Creek, BC					Falher, AB					Fort St. John, BC					Lacombe, AB					Shellbrook, SK				
	Yield (% 5440)	Gross Revenue/ac	Days to Maturity	Lodging	Height (in.)	Yield (% 5440)	Gross Revenue/ac	Days to Maturity	Lodging	Height (in.)	Yield (% 5440)	Gross Revenue/ac	Days to Maturity	Lodging	Height (in.)	Yield (% 5440)	Gross Revenue/ac	Days to Maturity	Lodging	Height (in.)	Yield (% 5440)	Gross Revenue/ac	Days to Maturity	Lodging	Height (in.)	Yield (% 5440)	Gross Revenue/ac	Days to Maturity	Lodging	Height (in.)
<b>Clearfield</b>																														
5525 CL	87	\$874	101	2.3	47	101	\$796	109	-	44	102	\$578	94	-	33	105	\$628	106	-	40	85	\$710	107	2.0	44	79	\$499	93	2.0	53
CS2200 CL	90	\$896	102	2.5	45	103	\$810	110	-	40	103	\$582	95	-	33	107	\$640	106	-	40	83	\$699	107	2.0	46	77	\$486	92	2.8	53
LSD (%)	15					11					6					20					10					14				
<b>Liberty Link</b>																														
5440	100	\$1,002	102	2.0	49	100	\$788	110	-	40	100	\$564	94	-	33	100	\$596	106	-	39	100	\$839	103	1.3	45	100	\$631	96	2.0	52
L252	111	\$1,112	102	0.0	46	108	\$850	109	-	41	107	\$603	94	-	30	124	\$738	105	-	37	109	\$915	106	1.5	45	107	\$673	95	2.5	51
L261	112	\$1,119	105	2.5	53	95	\$748	110	-	45	108	\$608	95	-	34	118	\$703	106	-	43	104	\$874	107	1.0	44	100	\$631	97	2.0	56
L140P	102	\$1,026	98	3.3	48	97	\$764	110	-	41	98	\$551	92	-	32	91	\$544	106	-	39	97	\$815	103	1.8	47	97	\$614	90	3.5	49
LSD (%)	8					7					19					12					7					18				
<b>Roundup Ready</b>																														
1990	90	\$902	101	3.0	45	77	\$608	111	-	38	103	\$580	95	-	30	94	\$559	109	-	35	84	\$701	105	2.5	46	88	\$557	90	4.3	52
6056 CR	85	\$850	104	2.5	45	91	\$716	111	-	38	87	\$493	97	-	30	105	\$624	108	-	37	90	\$758	108	1.5	43	81	\$514	93	2.8	49
6074 RR	95	\$951	104	2.3	45	103	\$814	110	-	38	95	\$537	96	-	31	121	\$721	108	-	41	95	\$799	106	1.3	44	86	\$546	97	3.0	49
6080 RR	93	\$929	100	2.3	45	96	\$758	111	-	40	86	\$483	95	-	31	109	\$651	108	-	37	98	\$821	106	2.0	46	83	\$525	91	2.5	51
CS2000	100	\$1,004	102	3.0	47	97	\$762	111	-	39	93	\$525	94	-	34	130	\$774	108	-	40	93	\$777	104	3.3	46	95	\$597	93	3.8	55
SY4157	100	\$1,002	104	3.0	46	104	\$817	110	-	41	90	\$509	96	-	30	110	\$658	109	-	34	88	\$738	104	2.3	43	82	\$515	96	3.0	55
SY4166	94	\$943	104	2.8	44	78	\$615	111	-	38	82	\$464	96	-	31	97	\$579	108	-	33	92	\$773	106	2.5	44	89	\$561	92	4.0	54
V12-1*	87	\$940	99	4.0	43	100	\$788	110	-	37	79	\$446	95	-	30	105	\$628	108	-	34	100	\$905	106	2.8	44	76	\$519	91	4.3	53
V12-3*	93	\$1,007	103	3.3	43	105	\$823	110	-	39	85	\$482	97	-	29	116	\$690	108	-	32	103	\$937	106	3.0	44	80	\$546	91	3.5	51
14H1176	104	\$1,040	105	2.8	49	104	\$819	111	-	41	92	\$520	97	-	30	112	\$666	109	-	39	97	\$817	109	1.5	44	83	\$522	95	3.0	54
14DL30209**	81	\$814	97	3.0	46	80	\$631	111	-	39	83	\$466	95	-	32	107	\$637	108	-	39	83	\$699	103	3.0	45	82	\$520	91	3.0	54
PS-SY 13-1579**	99	\$995	104	1.8	47	98	\$771	110	-	38	91	\$512	96	-	31	111	\$660	107	-	39	99	\$829	108	1.0	47	89	\$559	92	2.3	51
PS-SY 13-1651**	86	\$860	98	2.0	45	99	\$776	110	-	40	86	\$487	95	-	30	95	\$566	107	-	35	91	\$762	106	1.3	44	81	\$512	89	2.5	51
LSD (%)	8					10					15					14					11					10				
<b>Check Mean 5440 (bu/ac)</b>	92					72					52					55					77					58				
<b>Grand Mean (bu/ac)</b>	88					70					48					59					73					51				
<b>CV%</b>	6.7					7.6					9.7					12.9					8.7					8.4				

\*Indicates varieties with specialty oil profiles and premiums associated with pricing. Visit [www.canolaperformancetrials.ca](http://www.canolaperformancetrials.ca) for more details. \*\*Indicates varieties that have been supported for registration.

# CANOLA PERFORMANCE TRIALS 2015 RESULTS

## Field Scale Trial Yield Results

Field scale trials are managed by growers using their typical production practices. Trials are planted, swathed, harvested and, when necessary, sprayed by growers using the respective herbicide systems according to established protocols. Individual plots range from 0.5 to 1.5 acres. Results below are given as a percentage of the check, 5440. Yield in bu/ac for 5440 for each location is given in brackets at the end of each row. When comparing average results between varieties, consider the number of test sites for each variety. Field scale trials occasionally produce data that is above or below the expected range. If agronomic observations cannot explain these outliers, then they are checked against the statistical limits of deviation established by the Canola Performance Trials technical committee. If the data falls outside the limits, it is removed. For more details on individual trials and for data from sites that reported after this booklet was published, visit [www.canolaperformancetrials.ca](http://www.canolaperformancetrials.ca).

Location	2015 Yield Results (% of check, 5440)			
	Liberty Link			
	L140P	L252	L261	5440 (bu/ac)
<b>Long Season Zone</b>	105	104	100	100 (51)
Arcola, SK	103	105	101	100 (48)
Bagot, MB		93		100 (42)
Brandon, MB	108	100	98	100 (46)
Cedoux, SK	93	106	93	100 (30)
Coaldale, AB		99	96	100 (78)
Glenlea, MB	98	108	112	100 (58)
Lowe Farm, MB	114	116	107	100 (39)
Mariapolis, MB	115	111	105	100 (47)
Medicine Hat, AB		100	108	100 (70)
Petersfield, MB	104	101	103	100 (56)
<b>Mid Season Zone</b>	107*	110*	108*	100 (51)
Canora, SK	105	106	105	100 (52)
Carseland, AB	109†	118	118	100 (50)
Coleville, SK	101	105	96	100 (42)
Cudworth, SK		103	110	100 (55)
Dauphin, MB	96	102	104	100 (52)
Foam Lake, SK	113	114	120	100 (52)
High River, AB		99	99	100 (56)

Location	2015 Yield Results (% of check, 5440)			
	Liberty Link			
	L140P	L252	L261	5440 (bu/ac)
Indian Head, SK	122	125	124	100 (51)
Irma, AB		119	114	100 (52)
Killam, AB	102	115	106	100 (58)
Lavoy, AB		104	107	100 (61)
Regina, SK	114	112	108	100 (48)
Rouleau, SK	121	108	99	100 (51)
St. Gregor, SK	102	113	111	100 (44)
Swan River, MB	118	119	118	100 (46)
Trochu, AB	88†	115	101	100 (43)
Tugaske, SK	98	98	103	100 (55)
Waldheim, SK		114	108	100 (51)
<b>Short Season Zone</b>	83	107	102	100 (42)
Beaverlodge, AB		108	83	100 (36)
Fairview, AB		110	96	100 (37)
Falher, AB	86	111	112	100 (46)
Girouxville, AB	81	98	108	100 (43)
Shellbrook, SK		107	110	100 (50)
<b>Total</b>	104	108*	106*	100 (50)

\*Denotes 5% level of statistical significance using paired t-tests. Note that the paired t-tests in large scale tables only compare individual varieties to the check variety 5440 and not to each other.

†Site was straight cut.

# CANOLA PERFORMANCE TRIALS 2015 RESULTS

## Field Scale Trial Yield Results – Harvest Management Pilot Project

This year, to add more value to the Canola Performance Trials, a pilot project was conducted in which varieties were both swathed and straight cut at the same locations for comparison. The varieties with “– SC” given after them were straight cut, while the others were swathed according to the standard protocol. If this project is considered successful, it will be continued in next year’s trials according to a harvest management protocol which will be created.

Location	2015 Yield Results (% of check, 5440)				
	Liberty Link				5440 (bu/ac)
	L140P	L140P – SC	L252	L252 – SC	
<b>Long Season Zone</b>	103	104	102	92	100 (50)
Estevan, SK	103	101	103	84	100 (45)
Margaret, MB	112	116	113	104	100 (48)
Moosomin, SK	109	109	104	81	100 (56)
Portage la Prairie, MB	103	99	87	104	100 (50)
Russell, MB	93	100	100	98	100 (58)
Somerset, MB	100	99	101	89	100 (67)
Souris, MB	95	106	98	91	100 (51)
Tribune, SK	108	102	105	65	100 (34)
Warren, MB	103	109	104	108	100 (45)
<b>Mid Season Zone</b>	101	103	103	99	100 (52)
Arrowwood, AB	97	94	101	94	100 (49)
Blaine Lake, SK	95	100	100	89	100 (61)
Carbon, AB	104	103	92	89	100 (66)
Gravelbourg, SK	104	101	103	98	100 (33)

Location	2015 Yield Results (% of check, 5440)				
	Liberty Link				5440 (bu/ac)
	L140P	L140P – SC	L252	L252 – SC	
Kyle, SK	101	102	104	110	100 (48)
Mannville, AB	106	117	104	115	100 (50)
Moose Jaw, SK	105	111	108	114	100 (50)
Ohaton, AB	98	107	117	108	100 (38)
Regina, SK	109	107	105	92	100 (51)
Rosthern, SK	97	103	94	90	100 (70)
Star City, SK	99	102	110	100	100 (57)
Vulcan, AB	101	94	103	90	100 (50)
<b>Short Season Zone</b>	100	98	109*	109	100 (48)
Eaglesham, AB	106	105	109	102	100 (37)
Ponoka, AB	99	94	110	118	100 (58)
Sexsmith, AB	93	96	107	107	100 (49)
<b>Total</b>	102	103*	103*	98	100 (51)

\*Denotes 5% level of statistical significance using paired t-tests. Note that the paired t-tests in large scale tables only compare individual varieties to the check variety 5440 and not to each other.



**Taryn Dickson**

Resource Manager

Canola Council of Canada

Phone: 204-982-2111

Email: [dicksont@canolacouncil.org](mailto:dicksont@canolacouncil.org)

**Nicole Philp**

Agronomy Specialist

Canola Council of Canada

Phone: 306-551-4597

Email: [philpn@canolacouncil.org](mailto:philpn@canolacouncil.org)

**Curtis Rempel**

Vice President, Crop Production and Innovation

Canola Council of Canada

Phone: 204-982-2105

Email: [rempele@canolacouncil.org](mailto:rempele@canolacouncil.org)

Visit [www.canolaperformancetrials.ca](http://www.canolaperformancetrials.ca) to source canola variety information by location and to use the variety evaluation tools.

Brought to you by:

